

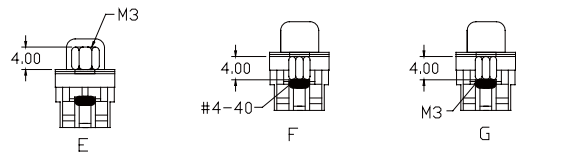
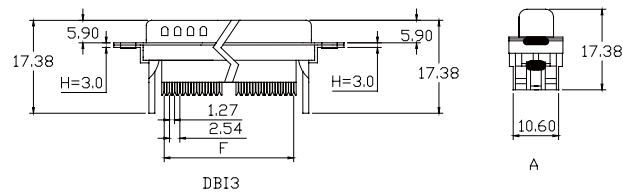
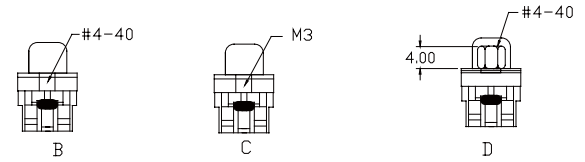
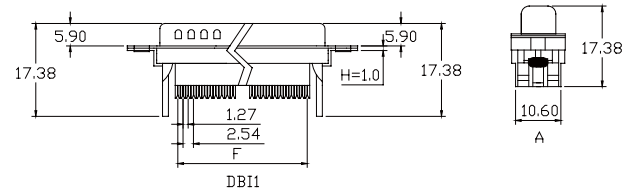
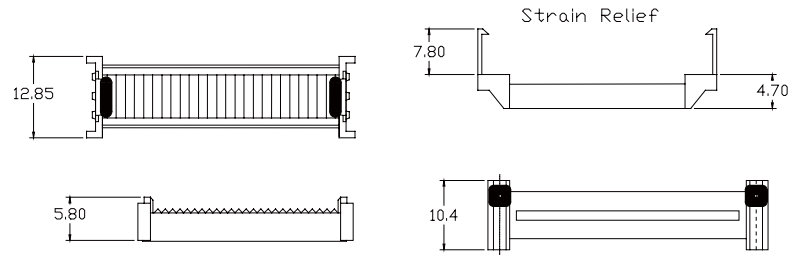
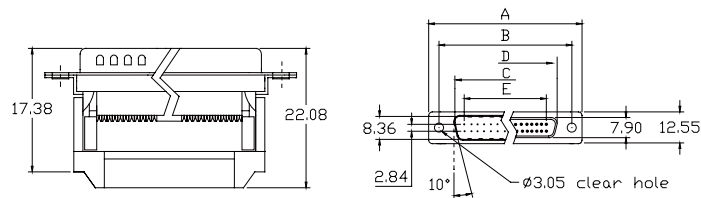
BY	CHK	REVISION RECORD MODIFICATIONS	DATE	REV.
ALLEN		RELEASE TO PRODUCTION	2007,9,10	1.0

SPECIFICATION

Current Rate: 3 AMP
 Insulation Resistance: 1000mΩ Min
 Contact Resistance: 20mΩ Max
 Dielectric voltage: 1000V AC for one minute
 Operation Temperature: -55°C to +105°C

MATERIAL

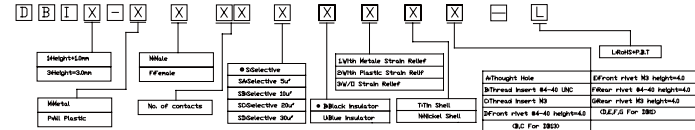
Insulator: Polyester, UL94v-0
 ©Standard: P.B.T
 Contact Pin F: Phosphor Bronze
 M: Brass
 Shell-Steel zinc plated or tin plated or nickel plated
 Screw-Brass nickel plated



Dimensions

POSITION	A	B	C	D	E	F
9	30.81	24.99	16.92	16.33	11.08	10.16
15	39.14	33.32	25.50	24.66	19.39	17.78
25	53.04	47.04	38.96	38.38	33.24	30.48
37	69.32	63.50	55.42	54.84	49.86	45.72

ORDER INFORMATION



APPRO	CHECK	DRAWN	PART NO.	DBIX-XXXXXXXX-L		
			ITEM NO.			
			DRAW NO.			
			UNIT	mm	SCALE	no
			TOLER		NO.	

DESCRIPTION